



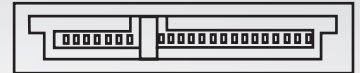
CABLE GUIDE



DISPLAY PORT



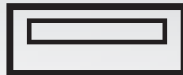
MICRO USB



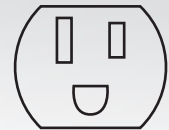
SATA



MINI DISPLAY PORT



USB



NEMA 5-15



DVI-D



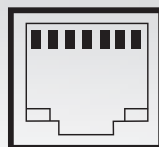
USB-C



IEC-C13



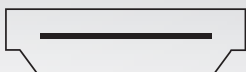
DVI-I



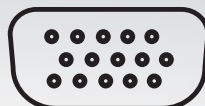
RJ45



3.5MM JACK



HDMI



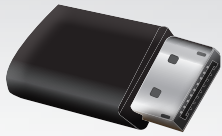
VGA



COAX JACK



CABLE GUIDE



DISPLAY PORT



MICRO USB



SATA



MINI DISPLAY PORT



USB



NEMA 5-15



DVI-D



USB-C



IEC-C13



DVI-I



RJ45



3.5MM JACK



HDMI



VGA



COAX JACK